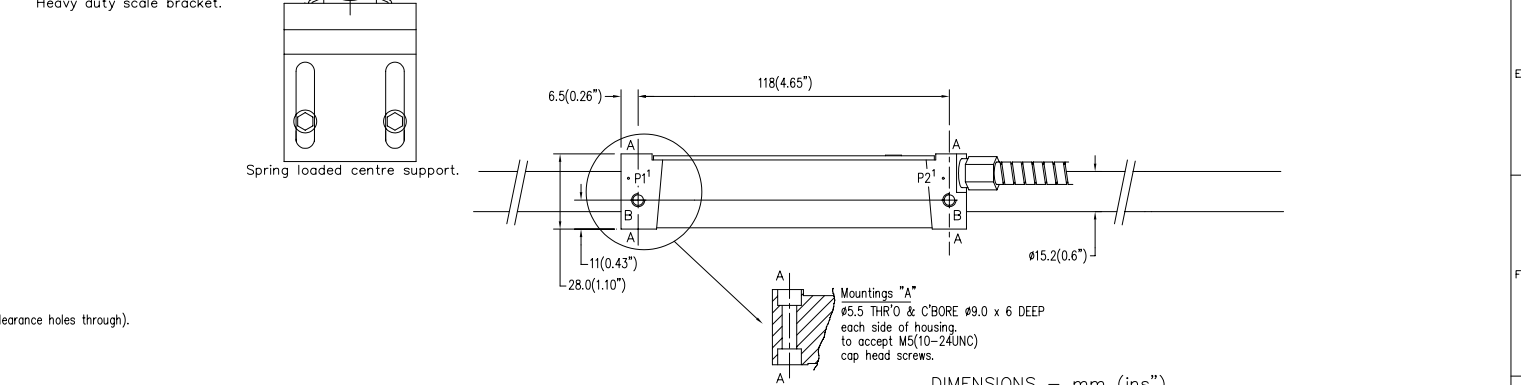
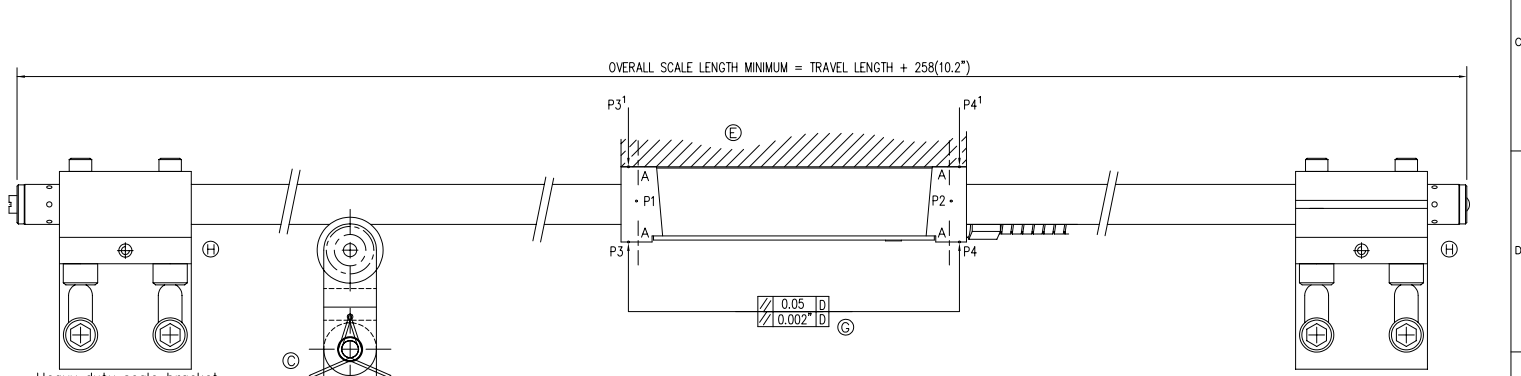
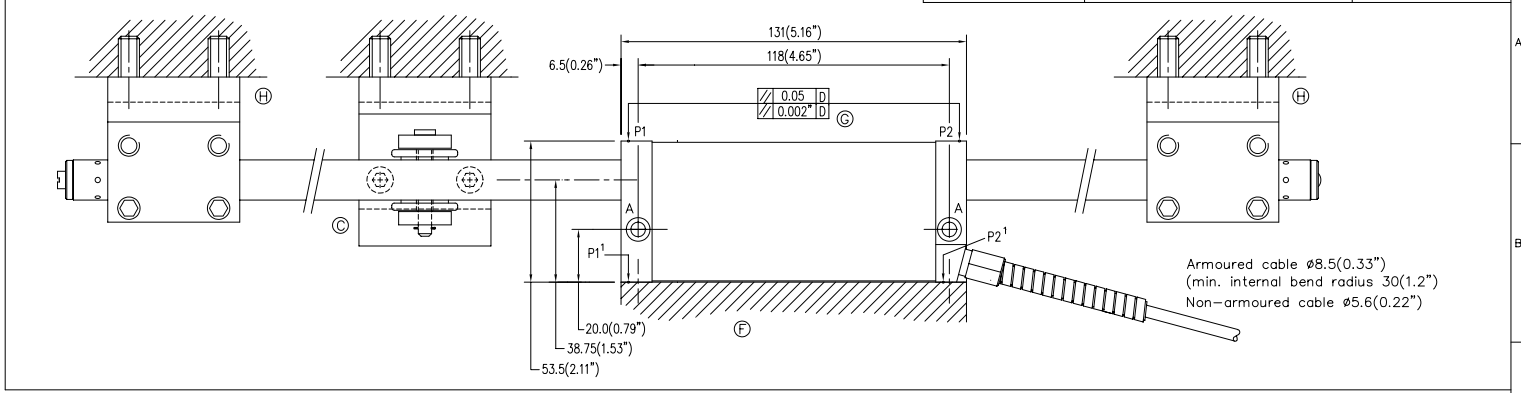


A - Encoder head mounting points 2off for M5(10-24UNC) cap head screws (clearance holes through).
 B - Encoder head mounting points 2off for M5 screws (thread depth 12).
 C - Spring loaded centre support.
 D - Machine Guideway.
 E/F - Encoder head mounting faces.
 G - Indicating parallel alignment required between encoder head and axis travel.
 H - Scale end mounting points to machine bed.
 P - Installation alignment points.



SPRING LOADED CENTRE SUPPORTS ARE INTENDED FOR USE WHERE THE READER HEAD IS MOVING AND THE SCALE TUBE IS STATIONARY.
REFER TO DRAWING 316-22630 FOR RECOMMENDED NUMBER AND POSITONAL DETAILS OF SPRING LOADED CENTRE SUPPORTS

DIMENSIONS - mm (ins")
 FOR FURTHER INFORMATION REFER TO INSTALLATION MANUAL

REV. ISS. DATE		C.N.No. ALTERATION		REV. ISS. DATE		C.N.No. ALTERATION		TITLE DIMENSIONAL DETAILS for SHG-TT, SHG-VV and SHG-VM series encoders (100°)		MATERIAL / FINISH (100°)		SCALE (ON A1)		UNLESS OTHERWISE STATED :- DIMENSIONS ARE IN MM.		TOLERANCES: - 0 DECIMAL PLACES ±0.5 1 DECIMAL PLACE ±0.2 2 DECIMAL PLACES ±0.1 ANGULAR ±1°	
DRAWN J.DRIVER		24-1-05		CHECKED		APPROVED		Leicester NEWALL England		SHEET 1 OF 1 DRAWING NUMBER 316-81653		REV. ISS. 0					